

MagCode MultiSystem

**Excellent technology,
superior handling!***

- ▶ Low profile, minimal mounting depth
- ▶ Problem-free direct contacting on FFC, FPC and circuit boards
- ▶ Maximum reliability
- ▶ High connection cycle capability
- ▶ Shockproof and vibration proof
- ▶ Perfect go / no-go system
- ▶ Ideal for automated assembly
- ▶ No more extra length on cables
- ▶ Optional automatic switch-off
- ▶ Waterproof
- ▶ Short-circuit-proof
- ▶ Self-finding
- ▶ Sideward mating possible
- ▶ Zero-force mating
- ▶ No pins to bend
- ▶ Easy clean

MagCodeMultiSystem

Ideal for current and data connection
for modules and components

Leading automotive manufacturers and suppliers are already testing different prototypes and variations of the **MagCodeMultiSystem** in test vehicles.

The main applications for the new revolutionary connector technology are in the following areas:

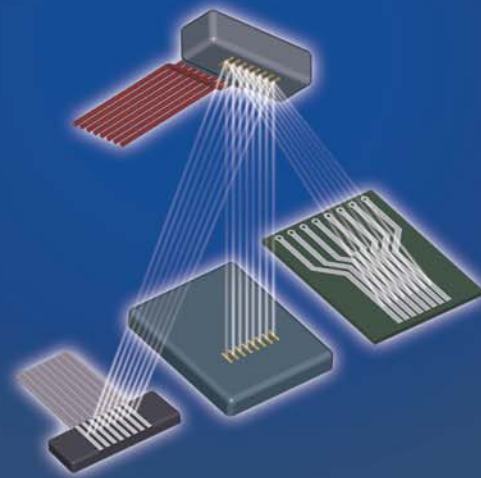
Exterior modules

- Front module
- Rear module
- Rear gate
- Roof module

Interior modules

- Instrumentpanel
- Headliner
- Door panels
- Multimedia
- Cockpit module
- Seat
- Variable consoles

MagCode MultiSystem



**The Self-Finding
Connection System**

Further Information:

MagCode AG
Aalener Straße 30
89520 Heidenheim
Germany

Fon +49 7321 8669-0
Fax +49 7321 9669-66

magcode@magcode.com
www.magcode.com

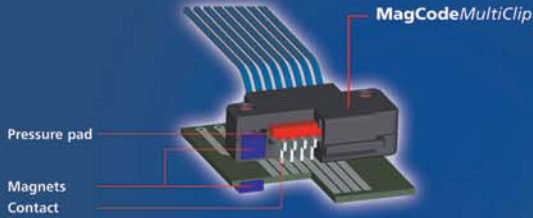
mc
MagCode

mc
MagCode

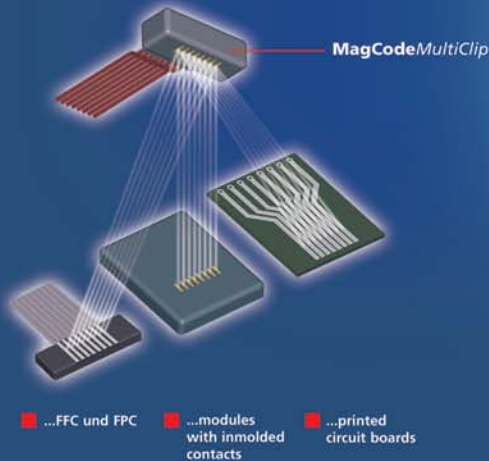
* MagCodeMultiSystem is subject to ongoing continuous product improvement.
As such, specifications are subject to change depending on the application.

MagCodeTechnology

In contrast to conventional connectors **MagCodeMultiSystems** use flat contacts instead of pins and pin holes. The contact pressure is generated by permanent magnets. It is exerted upon each individual contact by a pressure pad in a well defined way.



The mating connection between the **MagCodeMultiClip** and its counterpart – printed circuits or cables – can be made through mechanical locking or, to achieve the best “self-finding” effect, through magnets. Since all elements necessary for the creation of the contact pressure are located within the **MagCodeMultiClip**, the **MagCodeMultiSystem** is ideal for contacting...



MagCode Applications

MagCodeMultiSystems and **MagCodePowerSystems** are ideal for any kind of current and data connection for modular components in vehicles. Due to their superior technological features and design, it is possible to realize new functionalities for the vehicle users as well as rationalizations in the vehicle assembly.

